

User Manual

Contents

1. Installation
 - 1.1. Installing the .NET Framework
 - 1.2. Installing the DirectX Assemblies
 - 1.3. Installing the jukebox
2. Adding music
3. Playing Music
4. Amazon Music Recommender
5. YouTube Video Feature
6. Deleting Music From The Jukebox
7. Troubleshooting

1 Installing the Jukebox

1.1. Installing the Microsoft.net Framework

- 1.1.1. Locate and insert the runtime disk that was submitted with this jukebox. If you don't have this disk email cs01dkm@csd.abdn.ac.uk and request a copy. Alternatively use the windows update feature on the computer to install the latest .net framework runtime.
- 1.1.2. Browse to the d:\ drive on your computer where d:\ is the DVD-ROM drive.
- 1.1.3. Run the .net framework installer d:\Microsoft.Net Framework 3.0.exe.
- 1.1.4. Follow the onscreen instructions and use all default settings.

1.2. Installing the DirectX Assemblies

- 1.2.1. Locate and insert the runtime disk that was submitted with the jukebox. If you don't have this disk email cs01dkm@csd.abdn.ac.uk and request a copy. DO NOT attempt to install the assemblies in any other way if you do not have the runtime CD.
- 1.2.2. Browse to the folder d:\DirectX folder where d:\ is the DVD-ROM drive.
- 1.2.3. Run the installer d:\DirectX\DXSETUP.
- 1.2.4. Follow the onscreen instructions and use all the default settings.

1.3. Installing the Jukebox

- 1.3.1. Extract the jukebox.exe file from the compressed file and place the jukebox.exe in the folder you want to run it from. E.g. C:/program files/jukebox/jukebox.exe.
- 1.3.2. To run the jukebox simply double click the jukebox.exe file.

1.4. .Net Framework Errors

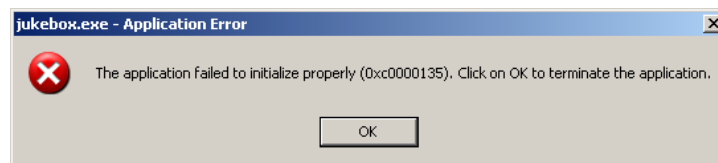


Figure 1 : Application Error

- 1.4.1. If you see an error message like the one in figure 1 then you have not installed the Microsoft.net framework correctly. This is described in section 1.1.

1.5. DirectX Assembly Errors

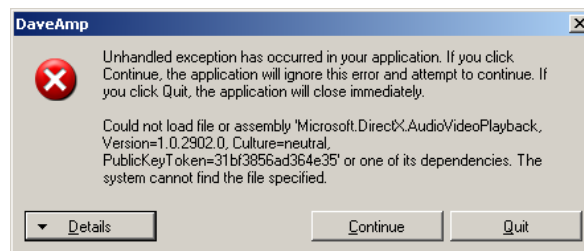


Figure 2 Assembly Errors.

- 1.5.1. If you see an error message like the one in figure 2 then you have not installed the DirectX assembly files correctly. This is described in section 2.1.

2. Adding Music to the Jukebox

2.1. Adding music to your computer

- 2.1.1. If you have plenty mp3 files on your computer then skip this step and move onto step 2.2.
- 2.1.2. Locate the DVD titled music and insert the DVD.
- 2.1.3. Copy some or all of the contents of the DVD to a folder on your hard disk.

2.2. Add a Single File to the Jukebox

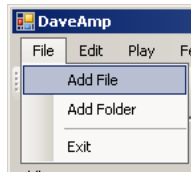


Figure 3 Add File

2.2.1. Use the mouse to select the Add File feature which can be found in the file menu at the top left corner of the application.

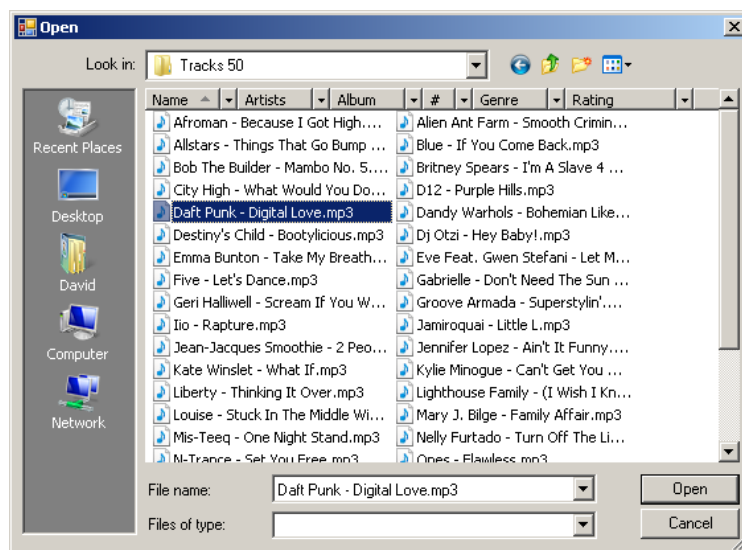


Figure 4 Open File Dialog

2.2.2. Use the open file dialog to navigate to a folder that has an mp3 file. Select this mp3 using the mouse and press the open button. The selected file should appear in the jukebox library. Repeat this step to add more individual files.

2.3. Adding a Folder and all its Contents to the Jukebox

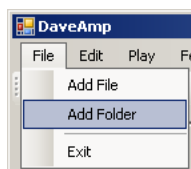


Figure5 Add Folder

2.3.1. Use the mouse to navigate to the add folder feature which can be found under the file menu in the top left hand corner of the application.

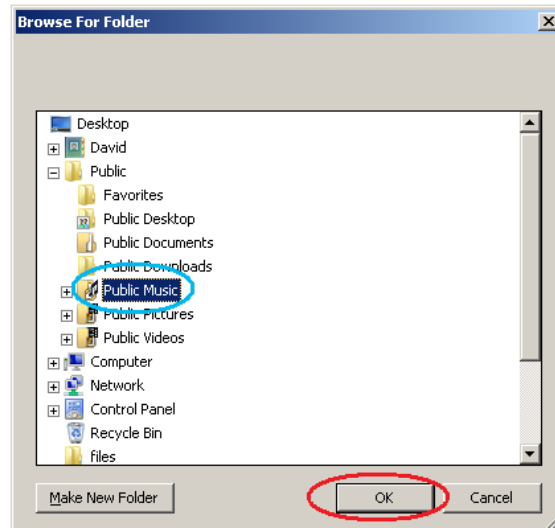


Figure 6 Open Folder Dialog.

2.3.2. Use the open folder dialog to navigate to a folder that contains mp3 files. Use the mouse to select the desired folder and then press the ok button. This will add all tracks in the given folder to the jukebox library. WARNING: If you add lots of files at once then the jukebox will freeze for a moment while it processes the tracks. This is normal.

3. Playing a Track

3.1. Play a track

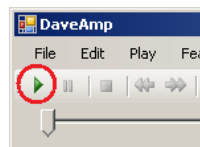


Figure 7 Play Track.

- 3.1.1. If you don't have any music loaded into the jukebox, please read section 2 for information on how to do this.
- 3.1.2. To play the first track in the library press the green play button as indicated by the red circle in figure 7. The scroll bar should start moving across the screen.
- 3.1.3. If you press the play button and nothing happens, firstly check that you have music loaded into the jukebox.
- 3.1.4. If the jukebox still won't play the track then the DirectX assemblies have not been configured properly. DO NOT try to fix this yourself. Seek assistance by emailing cs01dkm@csd.abdn.ac.uk

3.2. Pausing a Track

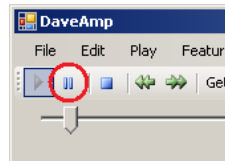


Figure 8 Pause Track

3.2.1. To pause a track that is currently playing press the blue pause button indicated by the red circle in figure 8.

3.2.2. To un-pause a track press the pause button a second time.

3.3. Stopping a Track

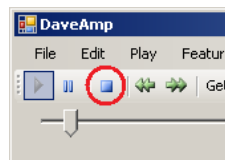


Figure 9 Stop Track.

3.3.1. To stop a track playing press the blue stop button indicated by the red circle.

3.4. Skipping Forwards and Backwards

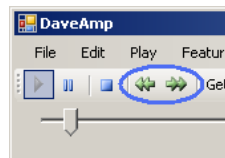


Figure 10 Skipping Tracks

3.4.1. To jump to the next track in the jukebox, press the green button pointing rightwards. This button is indicated by the blue circle in figure 10.

3.4.2. To jump to the previous track in the jukebox, press the green button pointing leftwards. This button is indicated by the blue circle in figure 10.

3.5. Scrolling Tracks

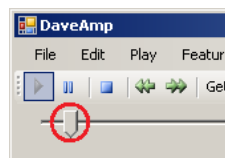
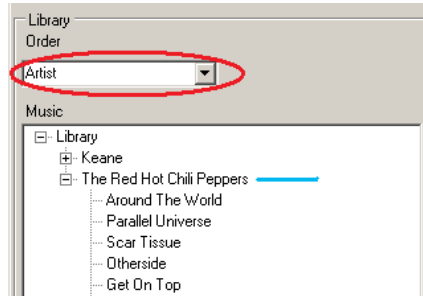


Figure 11 Seeking.

3.5.1. To seek to a specific part of a track, use the mouse to select the marker on the track bar as indicated by the red circle in figure 11. Drag the marker to the desired position on the track bar and release the mouse button.

3.6. Changing the Library Order



3.6.1. Figure 12 Artist Order

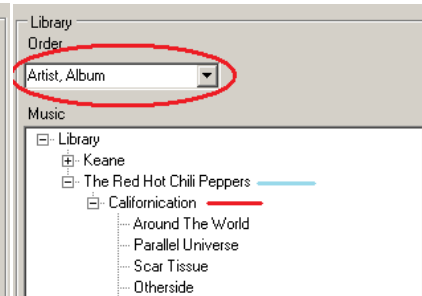


Figure 13 Artist Album Order

3.6.2. Figure 12 shows the tracks grouped by artist, where the blue line indicates the name of the artist.

3.6.3. Figure 13 shows the tracks grouped by artist then by album where the blue line represents the artist name and the red line represents the album name.

3.6.4. To change how the tracks are presented, use the mouse to navigate to the portion of the screen identified by the red circle in figures 12 & 13, press the downward arrow, and select a new way in which to order the library.

3.7. Finding and Selecting a Track in the Jukebox.

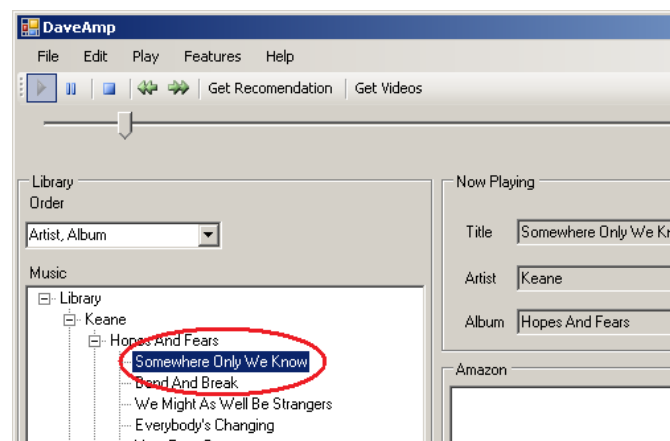


Figure 14 Track Selections.

3.7.1. The jukebox allows you to find and select a track to be played.

3.7.2. Expand the treeview to find the track you wish to play.

3.7.3. Use the mouse to click on the track you wish to play and it will automatically start playing.

4. Amazon Music Recommender

4.1. Getting a Music Recommendations

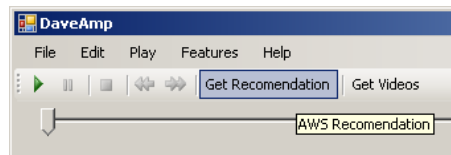


Figure 15 Get A Music recommendation

- 4.1.1. The music recommender will only present results if you have lots of music loaded onto the jukebox. This is because it only recommends music that you have on your system.
- 4.1.2. To get a recommendation start playing a track. This is described in section 3.1 & 3.7 of this user manual.
- 4.1.3. Use the mouse to click the get recommendation button that is highlighted in figure 15
- 4.1.4. The music recommender will take about a minute to work out recommendations for you.

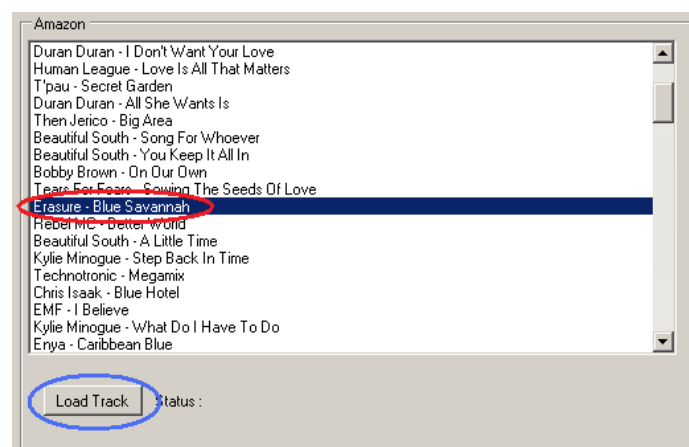


Figure 16 Recommendations.

- 4.1.5. To play a track that has been recommended to us, simply use the mouse to highlight the given track as indicated in the red circle of figure 16. To start playing the track press the load track button as indicated by the blue circle.

4.2. Configuring the Performance

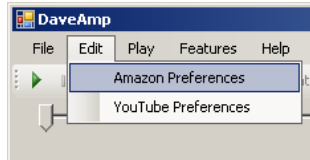


Figure 17 Amazon Preferences.

4.2.1. To open the Amazon preferences dialog box, select edit from the menu then Amazon preferences.

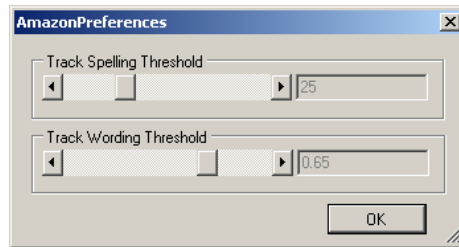


Figure 18 Amazon Preferences Dialog.

4.2.2. This dialog box allows you to change how strict the music recommender is with certain criteria.

4.2.3. The track spelling threshold feature allows artist and track names that might be spelt incorrectly in the jukebox library to be considered for recommendation as near matches.

4.2.4. The recommended Track spelling threshold value is 25 as shown in figure 18. A value of 0 is very strict and will yield the least results. A value of 100 is very liberal and will yield too many results. Use the scroll bar to change the settings.

4.2.5. The track wording threshold feature allows artist and track names that might be incomplete in the jukebox library to be considered for recommendation.

4.2.6. The recommended track wording threshold value is 0.65. A value of 1 is very strict and will yield the least results; a value of 0 is very liberal and will yield the most results. Use the scrollbar to change settings.

5. YouTube Video's

5.1. Starting the video feature.

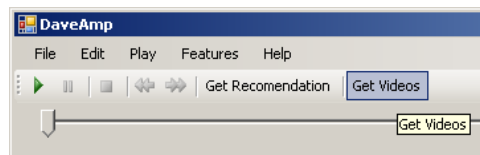


Figure 19 Starting the YouTube video feature.

5.1.1. To get you tube videos you must first start playing a track. This is described in section 3.1 & 3.7 of this user manual.

5.1.2. When a track is playing use the mouse to select the get videos option as lighted in figure 19.

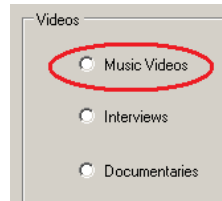


Figure 20 Choice of video.

5.1.3. When the YouTube dialogue appears choose which type of video you want to watch. This is done by selecting one of the radio buttons as circled in figure 20.

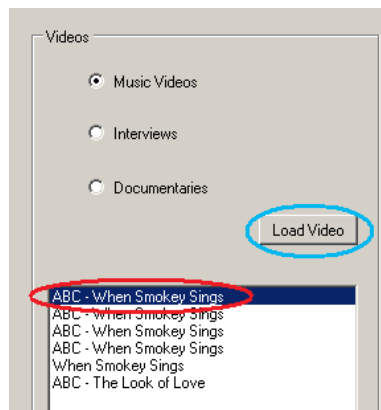


Figure 21 YouTube results.

5.1.4. Any results are presented in the list box as shown in figure 21.

5.1.5. To watch a video, make a selection from the list, as indicated by the red circle, and press the load video button as indicated by the blue circle.

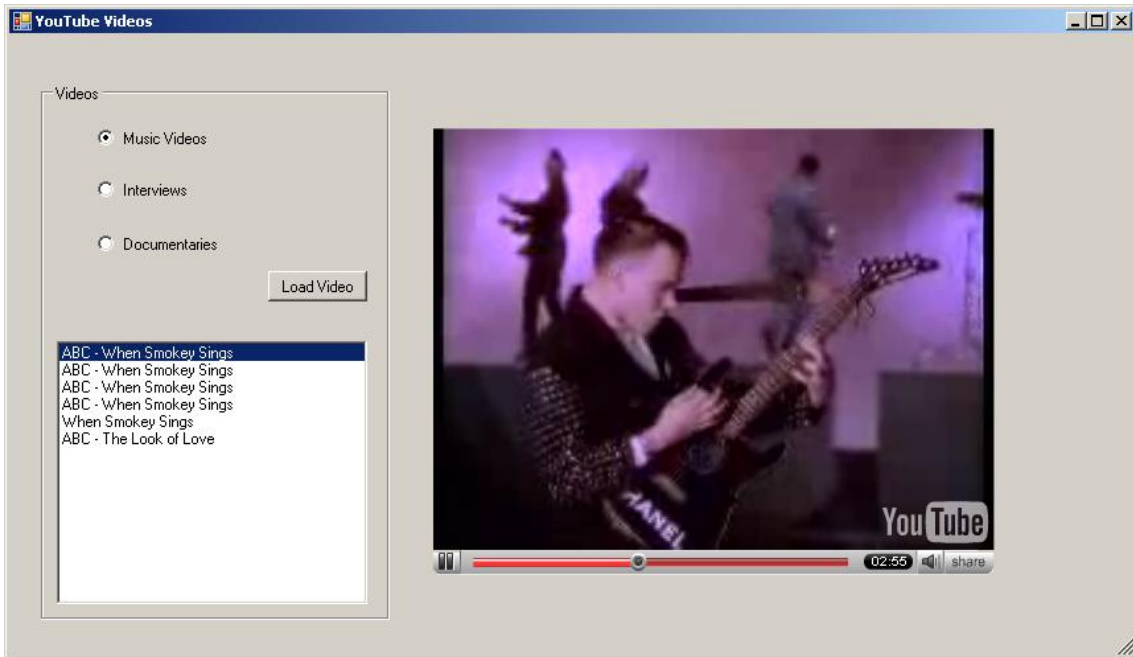


Figure 22 Video Playing.

5.1.6.If you do not get video playback like in figure 22, then you will need to download the adobe flash plug-in for internet explorer.

5.2. YouTube Preferences

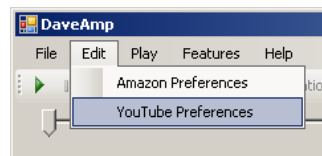


Figure 23 YouTube Preferences.

5.2.1.To open the YouTube preferences dialog box, select edit from the menu then YouTube preferences.

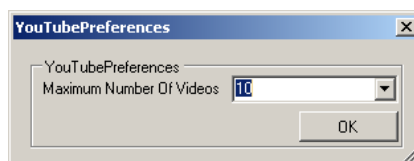


Figure 24 You Tube Preferences.

5.2.2.The jukebox allows you to specify how many videos are returned when you request a YouTube video. To change this simply use the mouse to click the down arrow in the combo box to choose a new value.

6. Deleting Files From the Jukebox

- 6.1. The jukebox does not have any menu options for deleting files from the jukebox. This is a pending feature.
- 6.2. You can clear the contents of the jukebox library by deleting the jukebox profile.
 - 6.2.1. To delete the profile in windows XP navigate to c:\Documents And Settings*USER*\Application Data\ Where *USER* is the username of your account on the computer. Simply delete the folder "JukeboxFinal 1.001".
 - 6.2.2. To delete the profile in windows vista navigate to c:\users*USER*\AppData\Roaming Where *USER* is the username of the account you are logged in as. Simply delete the folder "JukeboxFinal 1.001".

7. Troubleshooting

- 7.1. If the YouTube feature is not returning any results it is possible that the parts of the YouTube web service are not functioning properly.
- 7.2. If the YouTube feature only loads a static image and not a video, then you will need to download the Adobe Flash plug-in for Microsoft Internet Explorer
- 7.3. If you have tracks loaded but they don't play when you press the button then the DirectX assemblies are not properly installed on your system. DO NOT try to fix this yourself. Seek assistance by emailing cs01dkm@csd.abdn.ac.uk